

# ANNUAL REPORT

*Report of*  
KANAWHA COUNTY COURT



*On Operations of*  
**KANAWHA AIRPORT**

FOR YEAR ENDED DECEMBER 31, 1951



# ANNUAL REPORT

Report of

Kanawha County Court

*on operations of*

*Kanawha Airport*



*for year ended*

**December 31, 1951**

## KANAWHA AIRPORT

# Sponsors and Personnel

Kanawha Airport is owned by the citizens of Kanawha County, West Virginia, and is sponsored and operated by the Kanawha County Court.

---

### Members of Kanawha County Court

---

MONT L. CAVENDER  
*President*

J. M. SLACK, JR.  
*Member*

WILLIAM G. DAY  
*Member*



DALE G. CASTO  
*Court Attorney*

FRED C. ALLEY  
*Airport Manager*

---

### Citizens Airport Advisory Committee

---

W. F. FICKLEN

GEORGE GUTHRIE

J. V. SULLIVAN, *Chairman*

MORRIS FANCHER

CHARLES E. HODGES

D. M. GILTINAN

R. G. KELLY

## **DESCRIPTION OF THE SITE**

Kanawha Airport is situated east of Charleston, two and one-half miles air line, four and one-half miles by highway, 950 feet above sea level and 350 feet above the Kanawha River.

It consists of 767 acres of mountainous land. 265 acres of the site were cleared and graded, moving more than 9,000,000 cubic yards of earth and rock, which required two million pounds of explosives. The maximum height of mountain removed was 130 feet, a feat never equalled in airport planning anywhere in the world. Noted engineers from native and foreign lands where mountainous terrain prevails have visited this port and gone away enthused at the possibilities for air service at their respective homes.

## **DESCRIPTION OF THE FACILITIES**

There are two landing strips, one 6000' x 500' and the other 5000' x 500' with paving 5200' and 4750' x 150' wide, respectively; paved with asphaltic concrete; 10,000 lineal feet of paved parallel taxiways and 58,250 sq. yds. of passenger loading, plane parking and hangar aprons, paved with concrete. And, contracts have been let for 15,000 sq. yds. of automobile parking space to be completed early in 1952, which will accommodate about 400 cars.

A large steel hangar and a steel warehouse, both with concrete aprons, accommodate civilian planes, repair shop and field offices.

The Terminal Building, costing more than \$1,260,000 is one of the most modern and outstanding airport terminal designs in the United States.

A more complete description of the facilities on the site follow.



## THE TERMINAL BUILDING

This beautiful building, constructed of architectural concrete with aluminum windows and doors and terrazzo floors is arranged with five floor levels, unique in the facilities they provide. It is air-conditioned throughout.

The mural painting on the ceiling of the ticket concourse, by the renowned artist, Robert Lepper, is a vivid tribute to air transportation. And the photo-murals on the walls of the waiting room no less speak of the industry of the Great Kanawha "Magic" Valley and West Virginia.

This Terminal accommodates:

United States Weather Bureau.....	801 sq. ft.
Civil Aeronautics Administration Control Tower .....	590 sq. ft.
Civil Aeronautics Administration Local Offices .....	1223 sq. ft.
Two Dining Rooms, Operated by Sky Chefs, Inc. ....	3124 sq. ft.
One Coffee Shop, Operated by Sky Chefs, Inc. ....	773 sq. ft.
Two Large Kitchens (Sky Chefs, Inc.).....	3141 sq. ft.
Airlines Offices.....	3097 sq. ft.
West Virginia State Aeronautical Commission Offices .....	525 sq. ft.
Airport Manager's Offices.....	627 sq. ft.
Kanawha County Court Office.....	382 sq. ft.
Terminal Conference Room.....	382 sq. ft.
Ticket Sales Concourse.....	2675 sq. ft.
Passenger Waiting Room.....	1044 sq. ft.
Rest Rooms.....	1183 sq. ft.
Concessions Retail Stores.....	56 sq. ft.
Utility Rooms.....	4681 sq. ft.

## HANGAR

Erwin-Newman steel hangar 120 feet wide, 160 feet long, 25 feet high, with lean-to 160 feet long, 20 feet wide and 10 feet high, costing approximately \$87,000.

## **TEMPORARY STEEL ADMINISTRATION BUILDING**

In 1947 the grading neared completion and contract was let for paving the runways, and it became necessary to provide quarters for the coming operational equipment and personnel necessary to direct the Airlines services; hence, the purchase and erection of this structure, which served as the temporary terminal and administration building until the completion of the permanent Terminal Building on September 1, 1950.

It is built of steel, 40 feet wide, 161'-4" long, and 10 feet high; complete with doors, windows and ventilators, costing approximately \$50,933.00.



## THE WEST VIRGINIA NATIONAL GUARD LEASE

The Kanawha County Court has leased to the West Virginia National Guard 23.7 acres of the Airport site along the eastern boundary, for a nominal rental, on which land the National Guard in conjunction with the U. S. Air Force, has erected improvements costing more than \$1,310,000, and which at present accommodates the 167th Fighter Squadron, through Brig. Gen. Charles R. Fox, Adjutant General of West Virginia, and under command of Col. James K. McLaughlin.

Buildings and facilities erected and operated hereon are as follows:

1. Administration and storage building .....	\$ 277,018
2. Modern Hangar and facilities .....	568,029
3. Warehouse and storage building .....	96,766
4. Runways, taxiways, aprons and lights .....	243,307
5. Access road, Route 14 to lease .....	112,727
6. Engineering — surveys .....	13,090
	<hr/>
Total .....	\$1,310,937

The Kanawha County Court did not provide any of the funds for the above improvements. The National Guard uses the Kanawha Airport runways under the direction of the C. A. A. Control Tower.

In addition to the improvements on the airport level the National Guard has constructed on the south side of the State Road Commission access road, at a level considerably below the airport, a Motor Pool Station — auxilliary services.

## **A BRIEF HISTORY OF THE KANAWHA AIRPORT**

While the history of aviation and airports of the Kanawha Valley has on previous occasions been ably reported, perhaps we are justified in recounting the outstanding accomplishments of those who pioneered the way leading to the modern air transportation facilities the citizens of Kanawha County have provided.

Wertz Field, formerly located six miles west of Charleston, near Institute, provided our first commercial air service in 1929 and continued until May 12, 1942, when it was forced to close to provide space for the Federal Government's new synthetic rubber plant during World War Two.

Realizing that Wertz Field was rapidly becoming inadequate because space was too limited to accommodate the improved and larger planes, the Charleston Chamber of Commerce in 1937 appointed a committee consisting of, —

David M. Giltinan  
the late D. N. Mohler  
the late D. C. Kennedy  
Charles E. Hodges, Managing Director of  
the Chamber  
Fred C. Alley, Airport Manager, and,  
the late J. B. Pierce

to survey the airport needs and prospective new sites.

From the several suggestions, the present site, known locally as Coonskin Ridge, two and one-half miles airline, and four and one-half miles by highway, from the post office in Charleston, 350 feet above the Kanawha River level, was selected by the autumn of 1940.

In 1941 a bond issue was proposed by the Kanawha County Court in the amount of one million dollars; it was ratified by



a vote of the citizens of Kanawha County, but, those bonds were never used; mainly because the expected Federal aid was denied on account of the beginning of World War Two.

In 1943 the Kanawha County Court proposed a new bond issue of \$3,000,000, without waiting for Federal aid, because of the pressing need for air facilities. The bonds were ratified by a ratio of twenty-two to one, whereupon the Kanawha County Court proceeded to acquire the 767 acres in the Coon-skin area, at a cost of about \$170,000 paid out of its general fund, and to engage the engineering firm of Whitman, Requardt & Associates, Baltimore, Md., to prepare a master plan for the airport.

In 1944 contract was let to Harrison Construction Company of Pittsburgh, Pa., for the initial grading.

In 1945 Federal aid was obtained in the amount of \$2,750,000 through a special Act of The Congress of the United States.

In 1948, The Kanawha County Court proposed an additional bond issue of \$1,600,000, which included among other items, \$1,100,000 specifically for the completion of the grading, paving, and to provide the new Terminal Building, which was ratified by a vote of the people.

The Federal Government matched this bond issue with a contribution of about \$800,000 and later through its several air services contributed approximately \$380,000 additional toward the completion of the plant facilities.

The State Road Commission of West Virginia contributed nearly \$300,000 by building 1.08 miles of access road.

Making a total plant investment up to the time of the dedication, September 1, 1950, of approximately \$8,500,000.

The wisdom of those who promoted the Kanawha Airport Project, one of the most modern airports in the United States, has since been so emphatically confirmed by the constantly growing use of these facilities and is best indicated by the travel and poundage statistics set out herein.

Number of Passengers  
Inbound and Outbound

1948 —	98,690
1949 —	131,417
1950 —	140,467
1951 —	174,160

Pounds of air mail  
Inbound and Outbound

1948 —	139,417
1949 —	184,257
1950 —	242,727
1951 —	428,602

Pounds of air express  
Inbound and Outbound

1948 —	169,191
1949 —	308,782
1950 —	461,143
1951 —	709,275

Pounds of air freight  
Inbound and Outbound

1948 —	439,028
1949 —	822,251
1950 —	990,040
1951 —	751,545*

---

\*Drop in poundage due to discontinuance of night freight schedules.



## **Visitors – 1951**

Estimated number of visitors exclusive of students.....	511,480
Estimated number of students visiting the airport.....	11,000

### **Flight Service**

Forty Three (43-45) daily landings and departures at Kanawha Airport by the airlines named below, connect Charleston and the Kanawha Valley with most of the important cities east of the Mississippi River.

### **American Airlines**

Between New York and Chicago, serving the intermediate cities of Philadelphia, Baltimore, Washington, CHARLESTON, Cincinnati and Indianapolis.

### **Capital Airlines**

Between New York and Birmingham-Memphis, serving the intermediate cities of Pittsburgh, Wheeling, CHARLESTON, Bristol, Knoxville, Chattanooga, Atlanta and New Orleans via Mobile. Non-stop flights between Charleston and Atlanta, and between Charleston and New York City.

### **Eastern Airlines**

Between New York and St. Louis, serving the intermediate cities of Washington, D. C., CHARLESTON, Frankfort-Lexington, Louisville and Evansville.

Between Detroit and Miami, serving the intermediate cities of Cleveland, Akron, CHARLESTON, Roanoke, Winston-Salem, Charlotte, Columbia, Jacksonville and West Palm Beach.

### **Piedmont Airlines**

Between Norfolk and Cincinnati, serving the intermediate cities of Richmond, Lynchburg, Roanoke and CHARLESTON. Service is also authorized into Charlottesville, Virginia, Bluefield, Beckley, Huntington, and into Portsmouth, Ohio, when the latter cities can provide adequate airport facilities.

Two Hundred Eighty Three (283) communities are reached by direct service from Kanawha Airport.

Due to the modern landing equipment aids, Kanawha Airport enjoys a factor of performance, completing 98.2% of scheduled flights.

### **Airplane Movements During 1951**

Scheduled .....	32,125
Civil .....	24,760
Military .....	8,124
Local .....	18,095
	-----
Total .....	83,104

### **Need For Additional Direct Service**

Due to the many requests for direct service from Charleston to Columbus, Ohio and mid-west cities, the airlines have applied for the necessary authorities, which, if granted, should increase the daily operations by ten schedules at Charleston.



## **FINANCIAL STATEMENTS**

### **1951**

Detailed statements of monthly Revenues and Expenses, for the calendar year 1951 are included in this report, with inventories and capital account adjustments at the close of the year.

For the purpose of this report the terms "Net Annual Operating Income", "Comparative Statement of Income Accounts" and "Net Operating Income for Calendar years" represent only an analysis of the Receipts and Expenditures for the periods stated.

Classification of Capital Accounts is now under way, and when completed, appropriate depreciation charges may be determined by the Court in order that such charges may be reflected in future operating statements and Balance Sheets.

### **1948-1949-1950-1951**

Comparative Income Accounts for the above years are also included, indicating the Net Annual Operating Income.

### **Kanawha County Airport Bond Account**

\$3,000,000 par value issued June 7, 1944, sold at a premium of \$2664.

816,000 of above bear 3% interest and mature July 1, 1954.

2,184,000 of above bear 1¼% interest and mature July 1, 1975.

Annual retirements of principal and payments of interest have been made in accordance with contract.

---

\$1,100,000 par value issued May 1, 1948, maturing in three years, bearing interest at rate of 1½% per annum, were sold to the Kanawha Valley Bank of Charleston, and have since been wholly liquidated, in accordance with contract.

As is customary with most government agencies, the Kanawha County Court accounting system is established on a Cash basis, consequently, it is incumbent upon the Kanawha Airport, its subsidiary, to follow the same procedure.

Obviously, to sustain continuity of services for such an extensive operation of such technical character, requires the placing with vendors, purchase contracts which create financial obligations which cannot be liquidated within the current month.

At least, at the close of any fiscal year it appears desirable that the annual report be prepared on an Accrual basis, which follows:

Jan. 1, 1951 Cash balance in Sheriff's hands		\$ 2,830.43
Cash Receipts during 1951.....	\$112,857.70	
12-31-51 Accounts Receivable.....	7,522.35	120,380.05
		-----
12-31-51 Inventory Gasoline and Oil .....		5,075.81
Capital Account expenditures paid from current revenues 1951.....		6,803.11
		-----
Total .....		\$135,089.40
Disbursements during 1951.....	\$107,879.47	
12-31-51 Accounts Payable.....	7,193.41	
Capital Account-Refund by West Virginia Water Service Co., taken into 1951 Revenues .....	1,677.52	116,750.40
		-----
Net Operating Income for 1951.....		\$ 18,399.00

# 1951 REVENUES

SOURCES	January	February	March	April	May	June	July	August	September	October	November	December	Classified Totals	Total Cash Receipts	Accounts Received December 31st	Total Revenue
<b>GROUND RENTALS</b>																
West Virginia National Guard	\$ 1,650.00	\$ 1,650.00	\$ 1,650.00	\$ 1,650.00	\$ 1,650.00	\$ 1,650.00	\$ 1,650.00	\$ 1,650.00	\$ 1,650.00	\$ 1,650.00	\$ 1,650.00	\$ 1,650.00	\$ 4,950.00	\$ 4,950.00	\$ 4,950.00	\$ 4,950.00
Capital, Eastern, American and Piedmont Airlines	1,116.00	3,434.50	1,849.00	1,642.52	1,616.50	1,746.50	1,746.25	2,120.50	1,746.85	1,372.50	1,073.75	2,717.97	22,182.81	35.20		
Miscellaneous Commercial	60.00					9.25	11.60	2.35	25.00	25.00	25.00	25.00	160.00	160.00		
Automobile Storage		55.75	71.00		30.00								156.75			
United Fuel Gas Company																
TOTALS	\$ 2,826.00	\$ 3,490.25	\$ 3,570.00	\$ 1,642.52	\$ 1,646.50	\$ 3,396.50	\$ 1,755.50	\$ 2,132.10	\$ 1,774.20	\$ 1,397.50	\$ 1,110.75	\$ 2,742.97	\$ 4,950.00	\$ 27,484.79	\$ 2,308.64	\$ 29,793.43
<b>HANGAR RENTALS</b>																
Individuals and Companies	811.89	776.74	319.35	703.13	1,167.09	534.50	650.62	477.50	647.08	426.67	476.75	470.50	7,461.82			
Aircraft Parking	86.10	98.00	62.00	64.28	83.00	77.42	36.00	80.00	98.60	58.00	120.92	92.00	956.32			
Office Rentals	150.00					75.00				75.00	88.32	50.00	438.32			
Other Hangar Revenue																
TOTALS	\$ 1,047.99	\$ 874.74	\$ 381.35	\$ 767.41	\$ 1,250.09	\$ 686.92	\$ 686.62	\$ 557.50	\$ 745.68	\$ 559.67	\$ 685.99	\$ 612.50	\$ 8,856.46	\$ 8,856.46	\$ 1,153.88	\$ 10,010.34
<b>TERMINAL BUILDING REVENUE</b>																
Office Rent from four Airlines	\$ 541.98	\$ 1,746.07	\$ 1,073.87	\$ 831.31	\$ 831.31	\$ 831.31	\$ 831.31	\$ 990.72	\$ 831.31	\$ 671.90	\$ 461.89	\$ 1,360.13	\$ 11,003.11			
Office Rent—State Aero. Com.	65.63	65.63	65.63	65.63	65.63	65.63	65.63	65.63	65.63	131.26	65.63	65.63	787.56			
Office Rent—CAA Weather Bu. etc.	885.02	377.80	188.90	439.46	1,608.73	2,066.70	566.70	1,838.97	2,164.16	1,851.21	1,848.63	1,342.60	19,352.22			
Restaurant—Sky Chiefs, Inc.	941.15	1,097.68	953.77	1,608.73	1,621.11	1,935.51	2,066.70	1,838.97	2,164.16	1,851.21	1,848.63	1,342.60	19,352.22			
Souvenir Shop	112.28	85.33	92.63	118.46	132.74	181.65	155.87	197.68	211.01	197.85	152.09	121.55	1,759.14			
Flower Shop	30.00	30.00	31.64	39.89	30.00	37.43	30.00	30.00	30.00	30.00	60.00	60.00	378.96			
Insurance Vending Machine Co.	81.29	47.93	54.98	46.43	56.31	59.08	73.09	74.40	59.66	66.28	69.28	75.17	763.90			
Telephone Commissions	23.65	47.17	30.19	32.79	50.18	33.63	45.84	50.57	50.99	54.64	36.01	52.33	507.99			
Telegraph Commissions	31.18	15.88	14.70	17.15	17.08	16.69	15.94	21.88	25.18	18.80	21.41	21.51	237.40			
Museum Commissions																
Rest Room Locks and Dispensers	79.31	37.06	46.88		2.92	2.57	2.82	2.63	1.08	2.05	1.60	1.00	16.67			
Shoe Shine Machine Commissions																
Street Parking Meters																
Locker Rent	8.00	4.00	4.00	1.00	2.00	2.00	408.98		899.08	438.80	257.97	339.46	2,434.29			
Unclassified Revenue	11,442.67	2.00	5.00			12.00	3.00	4.68	5.00	234.85			1,709.20			
TOTALS	\$ 4,215.16	\$ 3,556.55	\$ 2,544.19	\$ 3,200.85	\$ 2,860.58	\$ 3,249.06	\$ 4,198.30	\$ 3,967.46	\$ 4,429.57	\$ 4,135.55	\$ 3,264.83	\$ 3,833.88	\$ 43,456.58	\$ 43,456.58	\$ 3,640.45	\$ 47,097.03
<b>AIRPORT SALES AND SERVICES</b>																
Gasoline and Oil Sales	\$ 3,386.50	\$ 1,704.21	\$ 1,970.27	\$ 1,296.87	\$ 3,848.97	\$ 3,109.24	\$ 3,541.06	\$ 2,253.21	\$ 3,104.98	\$ 2,900.54	\$ 3,198.13	\$ 2,582.62	\$ 32,876.60	\$ 32,876.60	\$ 419.38	\$ 33,295.98
Consumers Sales Tax Collected	19.84	18.21	8.23	15.89	26.58	13.12	15.28	11.88	15.96	10.91	14.74	12.63	183.27	183.27		183.27
TOTALS	\$ 3,386.34	\$ 1,722.42	\$ 1,978.50	\$ 1,312.76	\$ 3,875.55	\$ 3,122.36	\$ 3,556.34	\$ 2,265.09	\$ 3,120.94	\$ 2,911.45	\$ 3,212.87	\$ 2,595.25	\$ 32,876.60	\$ 32,876.60	\$ 419.38	\$ 33,295.98
GRAND TOTALS	\$ 11,475.49	\$ 9,643.96	\$ 8,474.04	\$ 6,923.54	\$ 9,632.72	\$ 10,455.44	\$ 10,196.76	\$ 8,922.15	\$ 10,070.39	\$ 9,004.17	\$ 8,274.44	\$ 9,784.60	\$ 112,857.70	\$ 112,857.70	\$ 7,522.35	\$ 120,380.05

Refund from W. Va. Water Service Company. Capital Account Credit.

Refund from W. Va. Water Service Company. Capital Account Credit.



# 1951 OPERATING EXPENSES

FOR	January	February	March	April	May	June	July	August	September	October	November	December	Classified Totals	TOTALS	Accounts Payable December 31st	Total Expenses
<b>FIELD OPERATIONS</b>																
Salaries.....	\$ 1,080.80	\$ 1,015.60	\$ 624.00	\$ 1,065.20	\$ 1,303.40	\$ 1,177.60	\$ 1,274.10	\$ 1,217.50	\$ 1,177.70	\$ 1,286.65	\$ 1,168.15	\$ 12,390.70	3,450.69			
W. Va. National Guard Utilities.....	697.36	587.46	579.12	482.03	121.26	678.87	115.43	69.06	41.90	57.20	40.99	70.37	680.72			
Electric Current.....	79.58	60.92	58.79	51.84		100.09	52.93	44.88	68.79	51.54	40.99	70.37	680.72			
Field Maintenance.....	1982.25	190.43	84.85	28.86		6.00	33.75	147.06	46.44	61.01	70.55	97.51	1,748.71			
Equipment.....	14.66	464.10	1.39	6.40									1,778.76			
Truck and Car Maintenance.....		58.47				76.53	13.75	32.39		3.50		44.85	237.28			
Insurance.....			156.66										156.66			
Other Utilities.....			46.97										46.97			
Unclassified.....	3.25		31,030.79			67.10	45.00	31.98		286.25			1,464.37			
<b>TOTALS.....</b>	<b>\$ 2,857.90</b>	<b>\$ 2,576.98</b>	<b>\$ 2,582.57</b>	<b>\$ 1,634.33</b>	<b>\$ 121.26</b>	<b>\$ 2,231.99</b>	<b>\$ 1,438.46</b>	<b>\$ 1,599.47</b>	<b>\$ 1,374.63</b>	<b>\$ 1,667.20</b>	<b>\$ 2,498.19</b>	<b>\$ 1,380.88</b>	<b>\$ 21,965.86</b>	<b>\$ 3,116.62</b>	<b>\$ 25,080.48</b>	
<b>HANGAR</b>																
Salaries.....	\$ 285.00	\$ 285.00	\$ 285.00	\$ 288.17	\$ 285.00	\$ 280.00	\$ 335.00	\$ 335.00	\$ 590.00	\$ 488.00	\$ 471.66	\$ 380.00	\$ 4,304.83			
Public Utilities.....	14.00	13.77	18.30	27.29		30.03	21.76	40.86	40.61	16.53	11.67	13.10	250.92			
Maintenance.....			3.80							6.85	4.53		15.18			
Insurance.....			156.67									207.00	363.67			
Unclassified.....																
<b>TOTALS.....</b>	<b>\$ 299.00</b>	<b>\$ 298.77</b>	<b>\$ 463.77</b>	<b>\$ 315.46</b>	<b>\$ 285.00</b>	<b>\$ 310.03</b>	<b>\$ 359.76</b>	<b>\$ 375.86</b>	<b>\$ 630.61</b>	<b>\$ 508.38</b>	<b>\$ 487.86</b>	<b>\$ 600.10</b>	<b>\$ 4,934.60</b>	<b>\$ 402.27</b>	<b>\$ 5,336.87</b>	
<b>ADMINISTRATION</b>																
Salaries.....	\$ 1,980.00	\$ 2,092.00	\$ 2,025.48	\$ 1,820.00	\$ 1,589.34	\$ 1,823.00	\$ 1,820.00	\$ 1,840.00	\$ 1,668.35	\$ 1,930.00	\$ 1,825.00	\$ 1,825.00	\$ 22,240.17			
Public Utilities.....	1,184.46	919.75	942.75	920.81	376.27	1,191.68	1,150.50	1,375.31	1,101.43	1,172.59	900.04	801.37	12,036.96			
Office Supplies.....	4.75	77.26	20.00	1.25		13.20			15.00	24.00	54.84		210.30			
Terminal Maintenance Supplies.....		75.08	337.85	83.20		190.20	170.98	132.10	1,020.86	247.39	221.29	225.36	2,724.31			
Janitor Supplies and Laundry.....		206.15	77.90	112.21		248.99	109.40	147.73	174.25	120.80	109.98	124.20	1,428.61			
Insurance.....	1,619.18		1,047.06		1,619.18			128.10				603.70	5,017.22			
Travel.....					166.80							220.00	386.80			
Street Parking Meters—Purchase.....				49.41				498.98	482.21	416.87	438.80		1,836.86			
Workmen's Compensation Premiums.....	43.19			153.92			37.33			47.74			178.27			
U. S. Social Security Tax.....							139.68			169.37			619.77			
Unclassified.....	54.55	15.80				65.60	485.00	750.00				156.80	1,370.95			
<b>TOTALS.....</b>	<b>\$ 4,886.13</b>	<b>\$ 3,386.04</b>	<b>\$ 4,451.04</b>	<b>\$ 3,140.80</b>	<b>\$ 3,751.59</b>	<b>\$ 3,531.67</b>	<b>\$ 3,913.49</b>	<b>\$ 4,764.12</b>	<b>\$ 4,590.20</b>	<b>\$ 4,128.76</b>	<b>\$ 3,549.95</b>	<b>\$ 3,956.43</b>	<b>\$ 48,050.22</b>	<b>\$ 3,433.19</b>	<b>\$ 51,483.41</b>	
<b>AIRPORT SALES AND SERVICE</b>																
Gasoline and Oil Purchases.....	\$ 2,403.22		\$ 3,844.52	\$ 2,294.48		\$ 3,748.33	\$ 2,968.41	\$ 4,004.72	\$ 1,718.83	\$ 2,220.04	\$ 2,438.03	\$ 2,795.80	\$ 28,526.35		\$ 241.33	\$ 32,982.18
Salaries—Gas & Oil Attendants.....	298.75	288.88	287.00	288.16	285.00	285.04	335.00	335.00	485.00	485.00	466.67	375.00	4,214.50			
<b>TOTAL SALES &amp; SERVICE.....</b>	<b>\$ 2,791.97</b>	<b>\$ 288.88</b>	<b>\$ 4,131.52</b>	<b>\$ 2,582.61</b>	<b>\$ 285.00</b>	<b>\$ 4,033.37</b>	<b>\$ 3,303.41</b>	<b>\$ 4,339.72</b>	<b>\$ 2,203.83</b>	<b>\$ 2,705.04</b>	<b>\$ 2,904.70</b>	<b>\$ 3,170.80</b>	<b>\$ 32,740.85</b>			
<b>CONSUMER SALES TAX PAID.....</b>	<b>\$ 18.34</b>	<b>\$ 19.84</b>	<b>\$ 18.21</b>	<b>\$ 8.23</b>	<b>\$ 15.89</b>	<b>\$ 26.58</b>	<b>\$ 13.12</b>	<b>\$ 15.25</b>	<b>\$ 11.88</b>	<b>\$ 16.92</b>	<b>\$ 10.91</b>	<b>\$ 14.74</b>	<b>\$ 189.94</b>			
<b>GRAND TOTALS.....</b>	<b>\$10,853.34</b>	<b>\$ 6,570.51</b>	<b>\$11,647.11</b>	<b>\$ 7,681.43</b>	<b>\$ 4,458.74</b>	<b>\$10,133.64</b>	<b>\$ 9,028.24</b>	<b>\$11,094.45</b>	<b>\$ 8,811.15</b>	<b>\$ 9,026.30</b>	<b>\$ 9,451.61</b>	<b>\$ 9,122.95</b>	<b>\$ 107,879.47</b>	<b>\$ 7,193.41</b>	<b>\$ 115,072.88</b>	

Show Remarks:  
 \*Fire Extinguishers.  
 \*Extending new cable for National Guard.  
 \*Larger portrait.  
 \*Apartment installation \$510—New doors \$165.00.  
 \*Lights. \*New International truck.  
 \*Capital Expenditures. Reported here because purchase contract required all meter revenues be applied to purchase contract until liquidated. Purchase price for the 60 meters \$3,960.

# **COMPARATIVE STATEMENT OF REVENUES**

	1948	1949	1950	1951
Ground Rentals \$	17,264.17	\$ 27,534.43	\$ 23,744.69	\$ 27,484.79
Hangar Rentals	9,568.77	12,005.86	9,837.33	8,856.46
Terminal Bld'g.	13,052.13	10,297.66	14,987.89	43,456.58
Totals ....	\$ 39,885.07	\$ 49,837.95	\$ 48,569.91	\$ 79,797.83

## **AIRPORT SALES AND SERVICES**

Gasoline and Oil Sales .....	94,629.91	112,856.89	35,699.05	32,876.60
Consumers Sales Tax Collected				183.27
Totals ....	\$134,514.98	\$162,694.84	\$ 84,268.96	\$112,857.70

## **ACCOUNTS REC.**

Dec. 31st .....	28,718.87	14,904.21	12,662.20	7,522.35
Grand Totals ....	\$163,233.85	\$177,599.05	\$ 96,931.16	\$120,380.05

## **CASH BALANCES IN SHERIFF'S HANDS**

January 1st .....		3,000.00	4,411.99	2,830.43
-------------------	--	----------	----------	----------

# COMPARATIVE STATEMENT OF EXPENSES

	1948	1949	1950	1951
Field				
Operations ----\$	22,479.92	\$ 20,782.00	\$ 18,191.23	\$ 21,963.86
Hangar				
Operation .....	8,555.48	6,656.61	7,323.51	4,934.60
Administration ..	16,111.60	17,942.83	28,669.49	48,050.22
Totals ----\$	47,147.00	\$ 45,381.44	\$ 54,184.23	\$ 74,948.68

## AIRPORT SALES AND SERVICES

Gasoline and				
Oil Purchases	88,890.55	115,901.41	31,666.29	(28,526.35)
Salaries of Gas & Oil Attendants				4,214.50
				32,740.85
Consumers Sales				
Tax Paid State				189.94
Totals ----\$	136,037.55	\$ 161,282.85	\$ 85,850.52	\$ 107,879.47
Accounts Payable				
Dec. 31st .....	36,895.89	8,674.38	18,090.59	7,193.41
Grand Totals	\$172,933.44	\$169,957.23	\$103,941.11	\$115,072.88



# **COMPARATIVE STATEMENT OF INCOME ACCOUNTS**

	1948	1949	1950	1951
Cash in hands of Sheriff Jan 1st \$		3,000.00	4,411.99	2,830.43
Revenues .....	134,514.98	162,694.84	84,268.96	112,857.70
Accounts Rec'v'le				
December 31st	28,718.87	14,904.21	12,662.20	7,522.35
Totals .....	\$163,233.85	\$177,599.05	\$ 96,931.16	\$120,380.05
Gasoline and Oil Inventory				
Dec. 31 .....	4,021.21	3,033.76	3,301.39	5,075.81
Expenditures for Capital Account Paid from Current Revenues .....	13,197.95	4,817.86	4,341.95	6,803.11
Grand Totals	\$180,453.01	\$188,450.67	\$108,986.49	\$135,089.40
Less				
Disbursements ..	136,037.55	161,282.85	85,850.52	107,879.47
Accounts Payable				
December 31	36,895.89	8,674.38	18,090.59	7,193.41
Capital Account Refunds taken into Revenue Accounts				1,677.52
Total .....	\$172,933.44	\$169,957.23	\$103,941.11	\$116,750.40
Net Operating Income for Calendar Years .....	\$ 7,519.57	\$ 18,493.44	\$ 5,045.38	\$ 18,339.00

## ADJUSTMENTS

Expenditures from 1951  
Current Revenues Chargeable  
to Capital Accounts

## Field Operations

National Guard Utilities—electric cable .....	\$ 998.74
Equipment: (1) Litter Picker.....	\$ 14.66
(2) Fire extinguishers .....	660.00
(3) Pickup truck.....	1,100.00
	<u>1,774.66</u>

Hangar — Maintenance tools .....	10.12
----------------------------------	-------

### Administration:

(1) Fire extinguishers .....	\$ 104.00
(2) Kitchen equipment.....	711.33
(3) Kitchen equipment.....	48.00
(4) Install capacitor.....	510.00
(5) Elevator doors and screen.....	165.00
(6) Yeager portrait and plaque ....	528.23
(7) Framing photographs of Reed and Calvert .....	50.00
(8) Maintenance tools .....	21.17
	<u>2,137.73</u>

Street Parking Meters .....	1,836.86
Cash — for change .....	45.00

Total .....	<u>\$6,803.11</u>
-------------	-------------------

## ADJUSTMENTS

Receipts taken into 1951  
Current Revenue Account  
more properly creditable to  
Capital Account

During 1951 Kanawha Airport received from the West Virginia Water Service Company, due to the reapportionment of charges for the cost of installing the water line, on account of new customers participating in the use of the line paid for by Kanawha Airport, a cash refund.

Because of the accounting system it became necessary to carry this item in the Current Revenue Account, whereas it is more properly creditable to Capital Account — Water Facilities . . . . \$1677.52.

The fiscal financial transactions of the Kanawha County Court are published in newspapers annually, as required by law.

However, the policy of the Kanawha County Court goes beyond the bare requirements of the statute, in that it desires to keep its citizens informed on its progress in pursuing its Public Works Programs heretofore authorized.

The subject of this report is *Kanawha Airport* — a project authorized by a vote of the people on two occasions providing \$4,100,000 toward its development, and receiving Federal and State aid to the amount of \$4,230,000.

Good transportation facilities are paramount to the growth of any community or industrial area such as the great Kanawha Valley.

Passenger traffic to and from planes at Kanawha Airport has increased from 98,690 passengers in 1948 to 174,160 in 1951 —

Mail pounds have increased from 139,417 in 1948 to 428,602 in 1951 —

Express and freight shipments have increased proportionately in the same period.

The importance to the nation of our airport is probably best expressed in a report by the Airline Traffic Survey of the Civil Aeronautics Board, dated New York, March 21, 1952, reading, in part, as follows:



**"CITY RANKS  
AMONG  
HIGHEST IN  
AIRLINE  
TRANSPORTATION"**

"More use is made of airplanes by travellers to and from Charleston, West Virginia, than is the case with most other communities in the United States.

Travellers purchased 8965 tickets during the one-month period in which the tabulation was made.

Of this number, 4525 were for flights into Charleston, and 4440 for flights out of the city. The average length of the trip was 312 miles.

The number of passenger miles credited to the Charleston Airport during the test month was 2,796,533. This was at the rate of 32,558,396 passenger miles a year.

This degree of air activity netted Charleston a ranking well above average among 504 cities from which scheduled airlines operate."

With this emphasis on the importance of Kanawha Airport we believe every citizen of the County should, at some convenient time, visit this busy terminal. As previously stated, more than one half million people visited the airport during 1951.

Visitors are welcome. Guides are available without charge, to conduct groups through the terminal.

The Sky Chef's Coffee Shop is a popular place for High and Junior High School groups.

The dining and club rooms, served by Sky Chefs, are among the popular dining places in the valley.

The flower shop and Souvenir store are popular with the young folks.

Your Airport is the spark plug of industry in the Kanawha Valley and without it, the proposed expansions could be doubtful. It is a great boon to the employment of our people. Just ten minutes from Capitol Street, Charleston, by automobile — See it!

**Comparative Highway  
Mileage, Airline Mile-  
age and Air Travel  
Time from Charleston  
Airport**

**To West Virginia Cities:**

	Miles via Highway	Miles via Air	Minutes of Flight
Beckley .....	73	56	21
Bluefield (Princeton) .....	124	77	29
Clarksburg .....	158	99	40
Elkins .....	164	107	40
Huntington .....	50	50	19
Martinsburg .....	324	209	77
Morgantown .....	202	132	50
Parkersburg .....	78	60	23
Princeton .....	114	77	29
Wheeling .....	164	135	50
White Sulphur Springs .....	112	88	33

**To Out-of-State Cities:**

Atlanta, Ga. ....	539	415	124
Baltimore, Md. ....	398	289	134
Boston, Mass. ....	789	607	
Chicago, Ill. ....	475	440	182
Cincinnati, Ohio ....	204	172	73
Cleveland, Ohio ....	274	216	113
Detroit, Mich. ....	361	321	172
Indianapolis, Ind. ....	310	260	123
Jacksonville, Fla. ....	735	645	226
Lexington, Ky. ....		167	64
Louisville, Ky. ....	272	229	84
Miami, Fla. ....	1084	1000	313
New York, N. Y. ....	566	467	134
Pittsburgh, Pa. ....	227	164	57
Philadelphia, Pa. ....	485	371	135
Richmond, Va. ....	312	300	120
Roanoke, Va. ....	185	115	51
Washington, D. C. ....	364	249	80

## **AIRPORT TELEPHONES**

### **Information and Reservations:**

American Airlines.....	60-361
Capital Airlines.....	60-676
Eastern Airlines.....	60-301
Piedmont Airlines.....	60-691
U. S. Weather Bureau.....	30-413
W. Va. Air National Guard, 167th Fighter Sqdn. Base.....	65-252
W. Va. State Aeronautics Commission.....	25-841
Civil Aeronautics Administration District Engineer.....	31-267

---

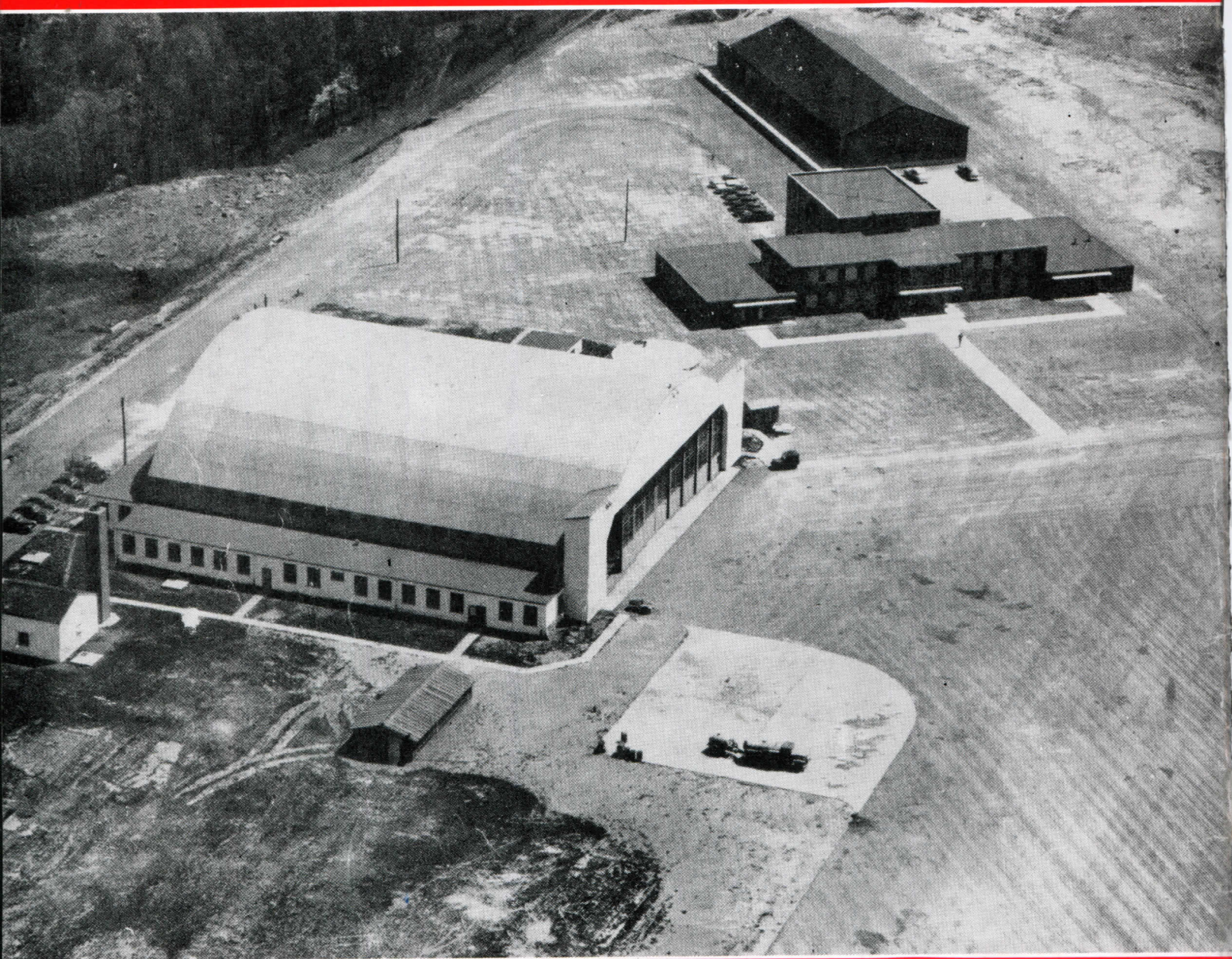
### **Dining and Club Room Reservations:**

Sky Chefs, Inc. ....	61-892
----------------------	--------

---

Kanawha Airport Terminal Building Manager's Office .....	35-124
Airplane Hangar — Kanawha Airport .....	35-126





**Headquarters 167th Fighter Squadron  
West Virginia National Guard**